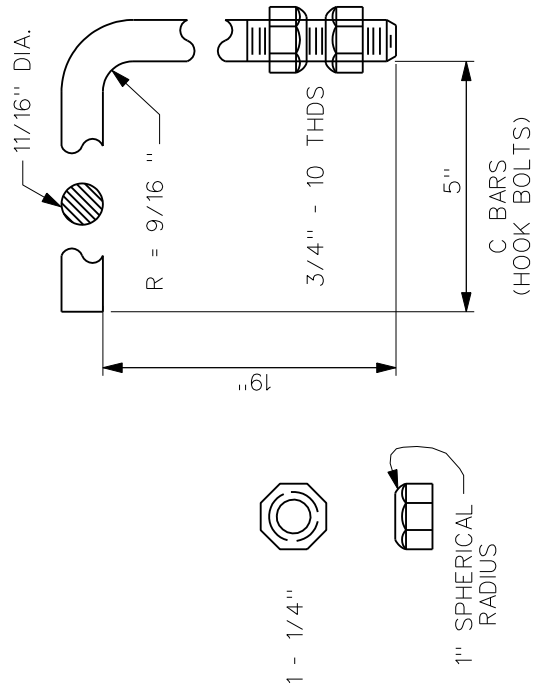
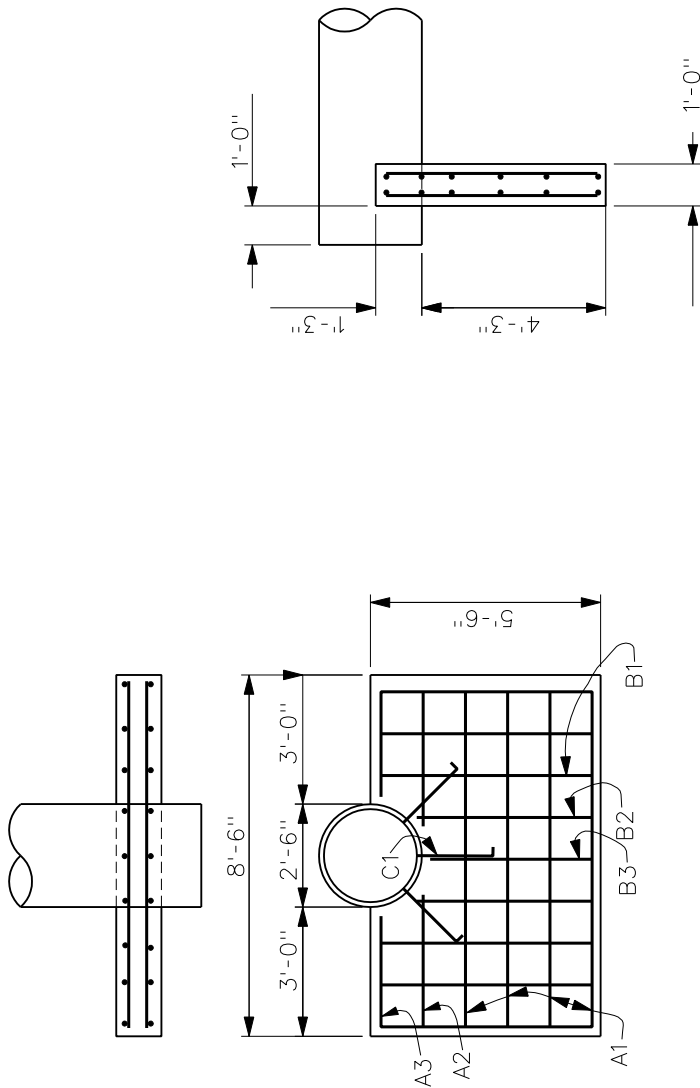


THIS IS AN ARCHIVED FIGURE AND IS NO LONGER MAINTAINED AS PART OF THE SUDAS STANDARD SPECIFICATIONS. THIS FIGURE MAY CONFLICT WITH THE CURRENT SPECIFICATIONS, AND SECTION AND FIGURE REFERENCES MAY NO LONGER BE VALID.



REINFORCING STEEL		
LOCATION	BAR	LENGTH
HORIZ. BF & FF	4A1	8'-0"
HORIZ. BF & FF	4A2	3'-0"
HORIZ. BF & FF	4A3	2'-6"
VERT. BF & FF	4B1	5'-0"
VERT. BF & FF	4B2	4'-0"
VERT. BF & FF	4B3	3'-6"

NOTE:
 STEEL SPACING AT 10" CENTERS.
 HOOK BOLTS AND NUTS SHALL BE GALVANIZED.
 CLEAR DISTANCE FROM FACE OF CONCRETE TO NEAR STEEL SHALL BE 3".