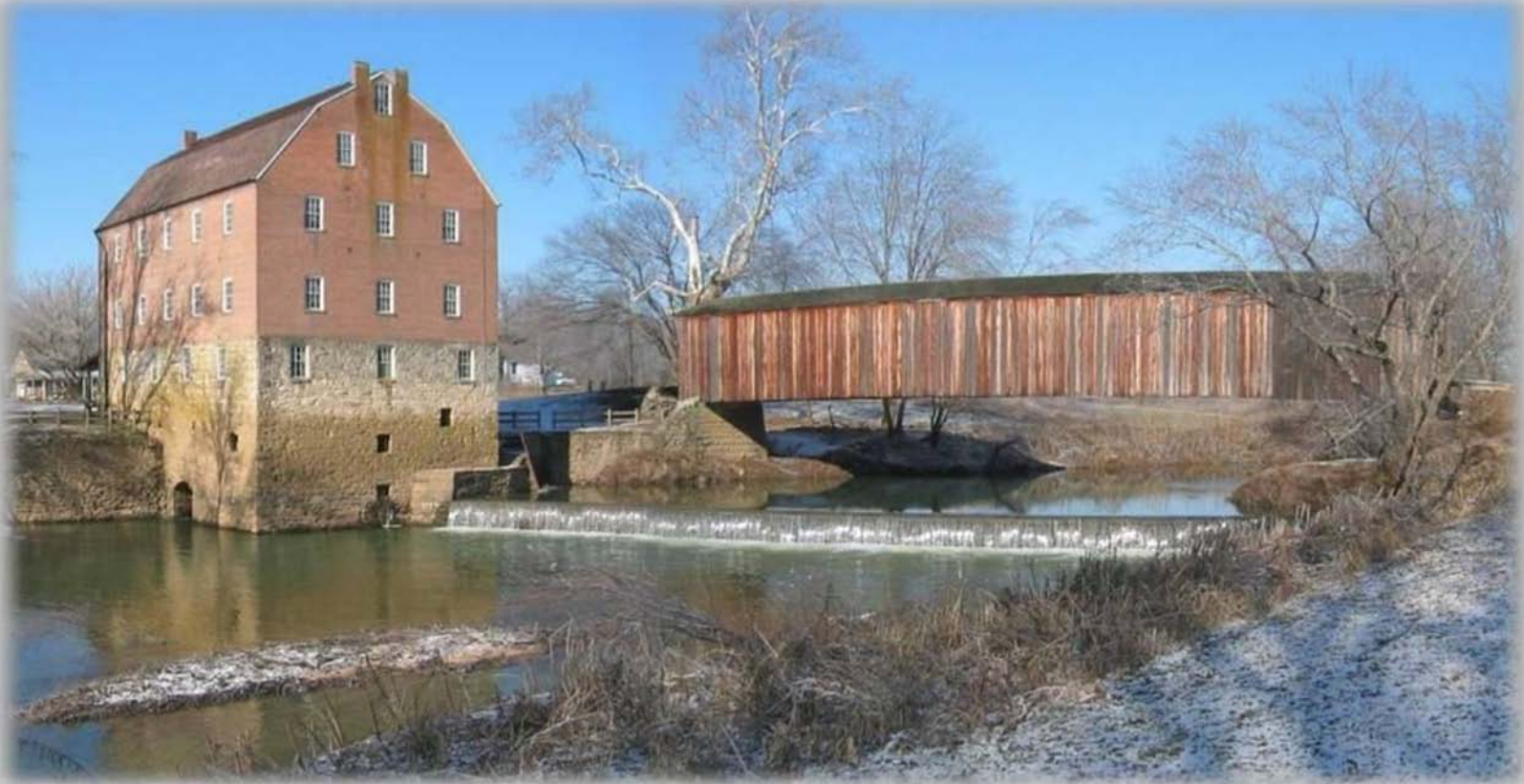


Burfordville Covered Bridge

Preserve, Protect, Reconstruct



Bollinger Mill State Historic Site



Lesley McDaniel

Site Administrator

Burfordville Covered Bridge

Built by Joseph Lansmon

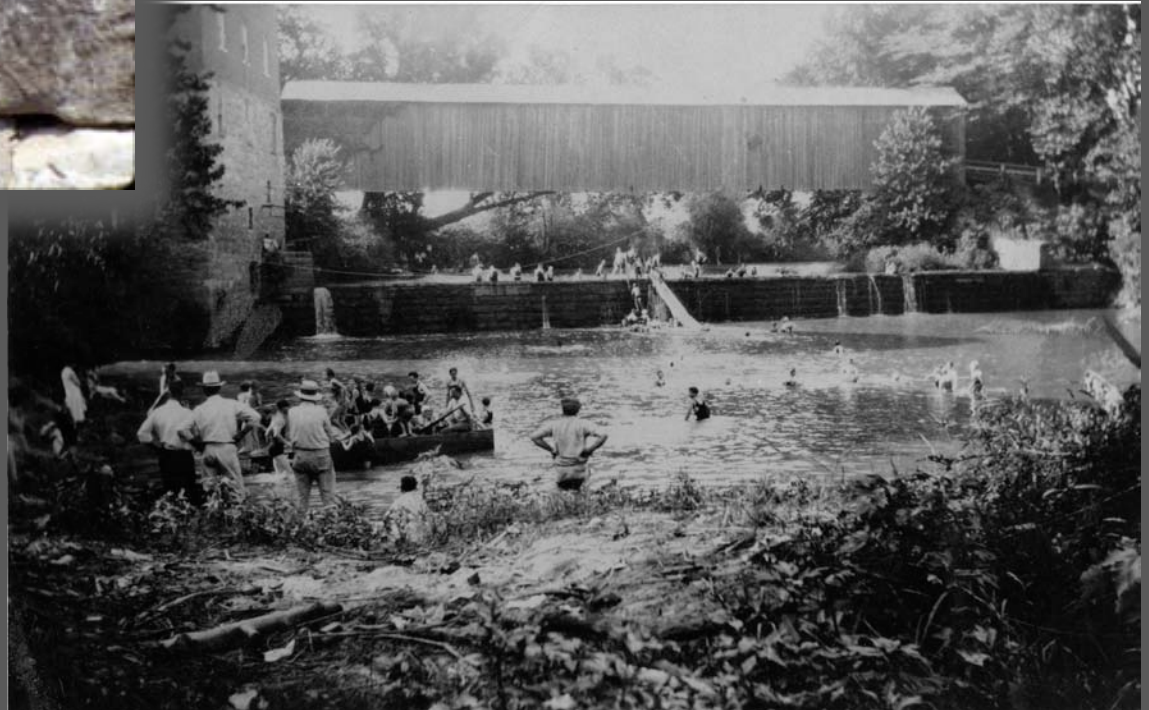
Commissioned by Cape Girardeau
Macadamized Road Company in 1858



Completed after
Civil War

Howe Truss

140 foot span over
Whitewater River















FIRE




ALARM

PUSH

PULL DOWN



 Simplex













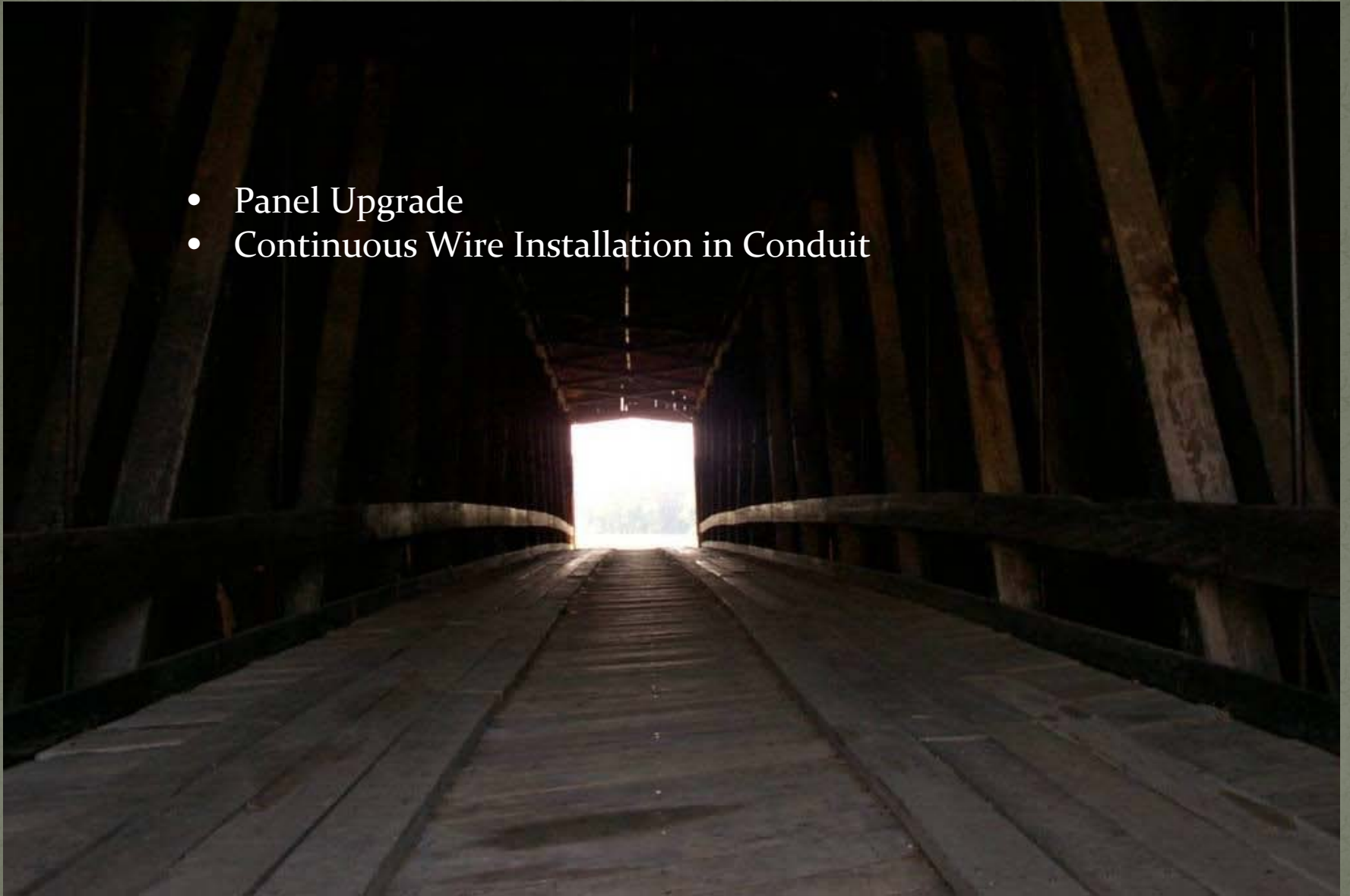
Looking Back



- Panel Upgrade



- Panel Upgrade
- Continuous Wire Installation in Conduit



- Panel Upgrade
- Continuous Wire Installation in Conduit
- Surge Protection



- Panel Upgrade
- Continuous Wire Installation in Conduit
- Surge Protection
- Waterproof Connectors



- Panel Upgrade
- Continuous Wire Installation in Conduit
- Surge Protection
- Waterproof Connectors
- Additional Structural Sensitivity









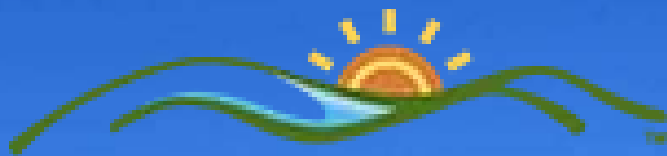








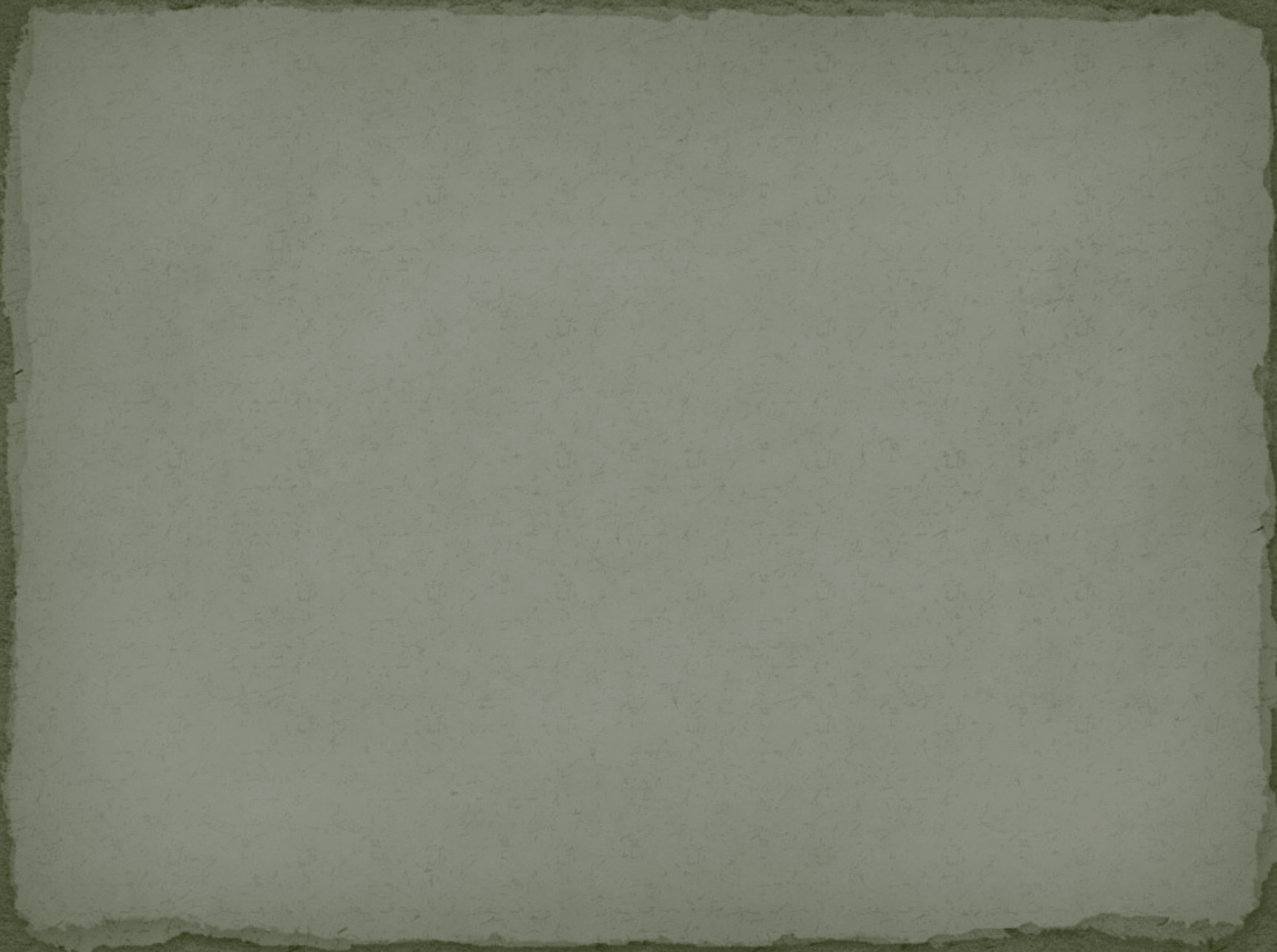




MISSOURI
STATE PARKS



Bollinger Mill State Historic Site





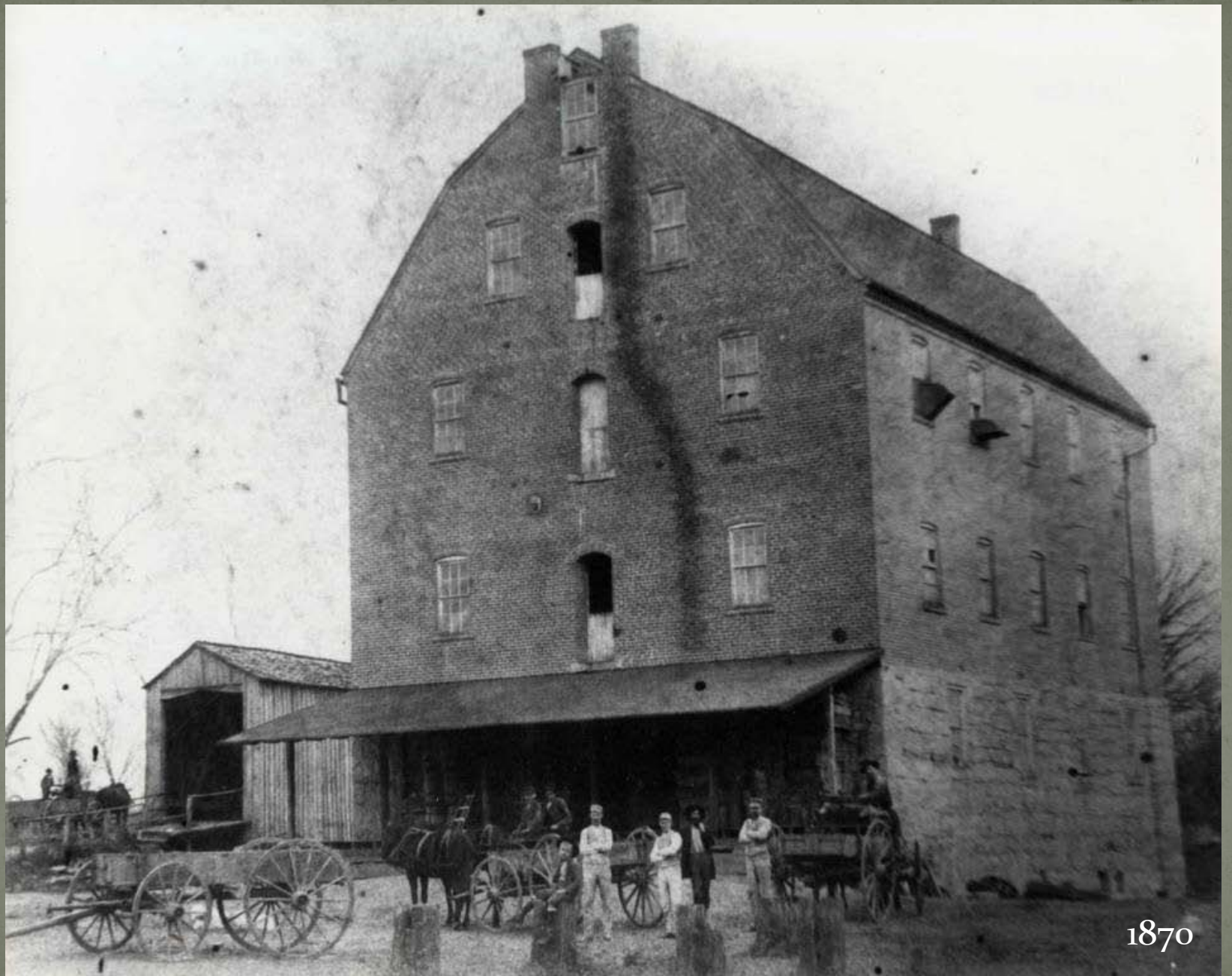




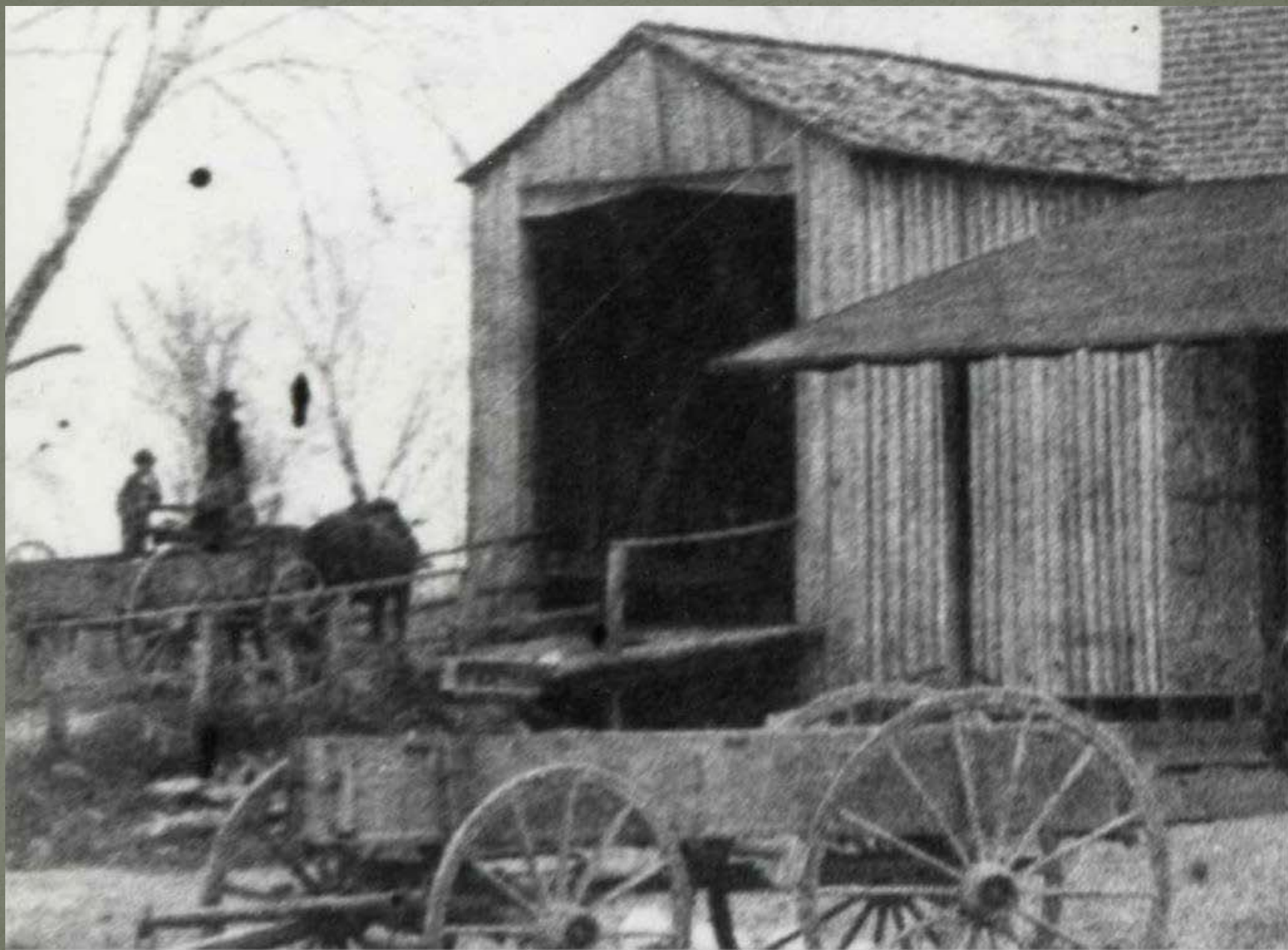








1870





1939



Locust Creek Covered Bridge





Allenville Covered Bridge

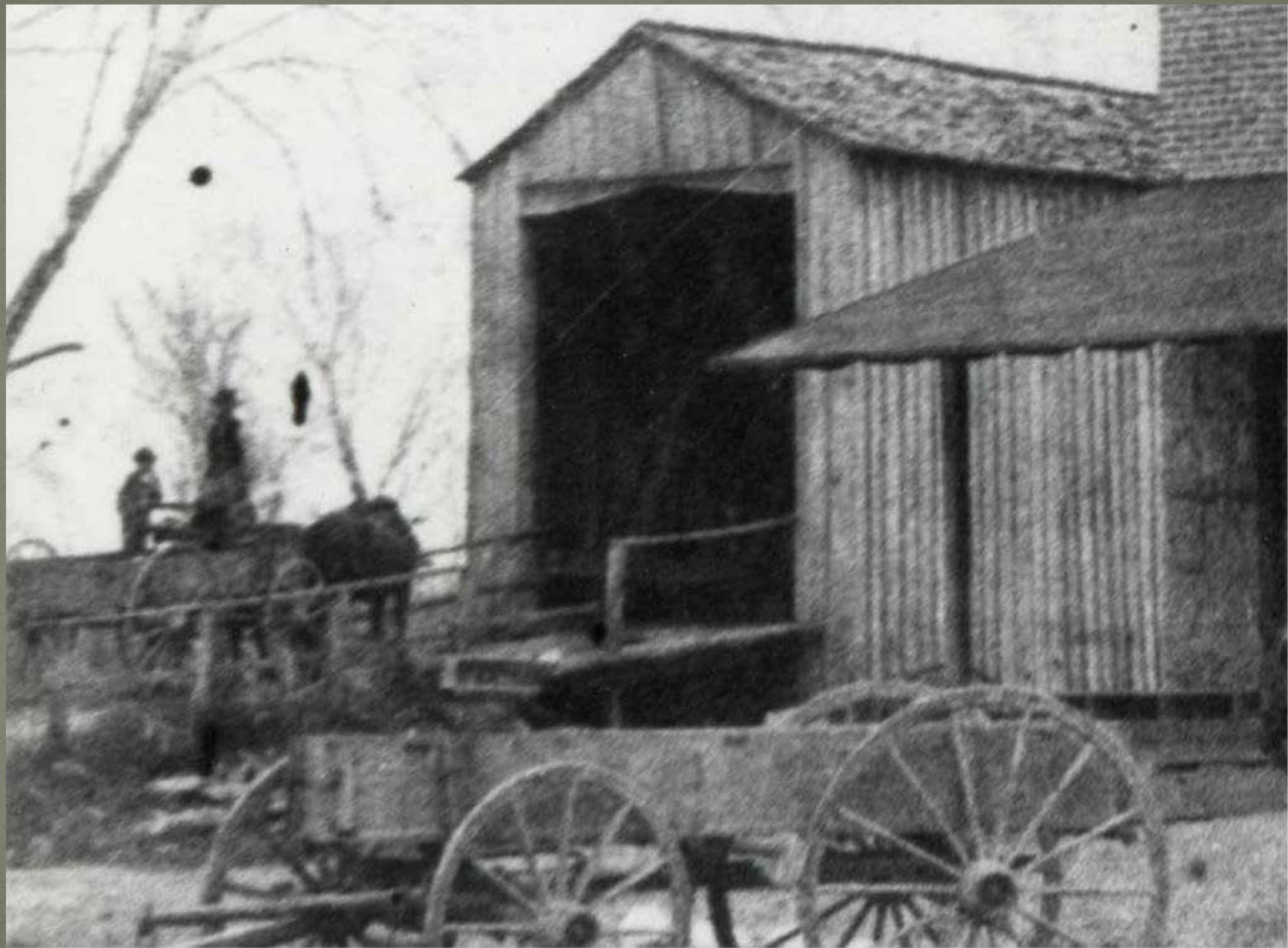


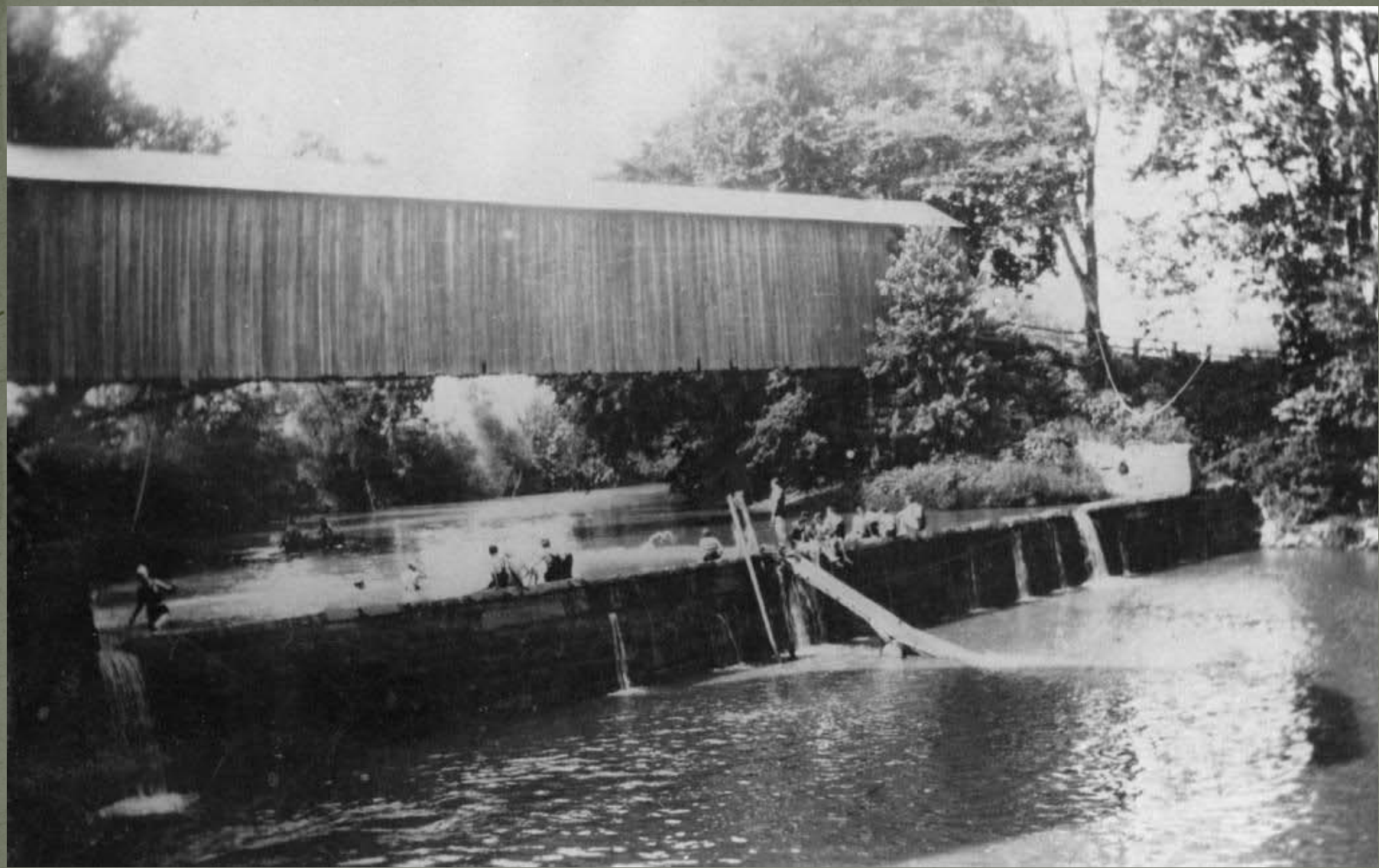


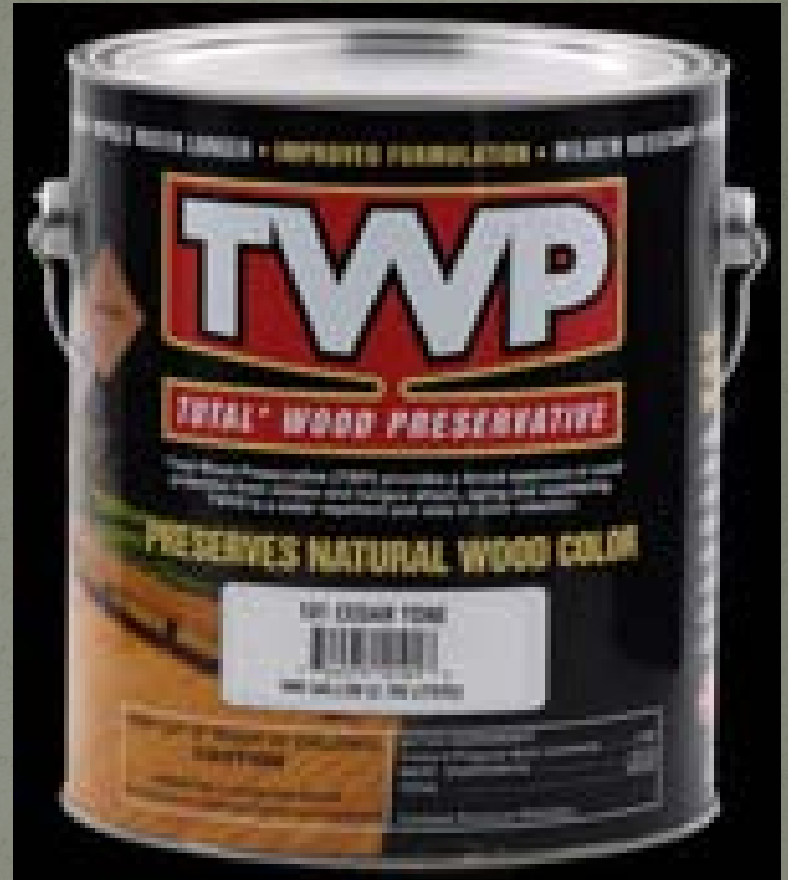




















Before



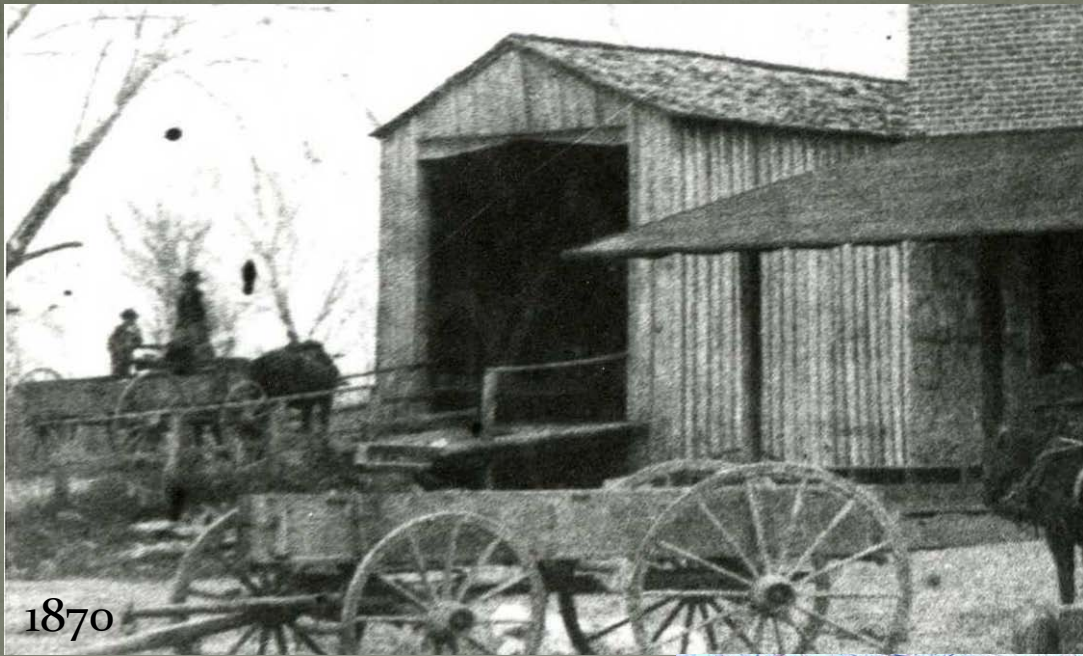
After



Before



After



1870



2012





Carbolineum Wood Preserving Co.
6683 North 40th Street
P.O. Box 090348
Milwaukee, Wisconsin 53209-0348

Phone: 414-353-5040
800-671-0093

Fax: 414-353-3325

Email: sales@carbolineum.com

Website: carbolineum.com