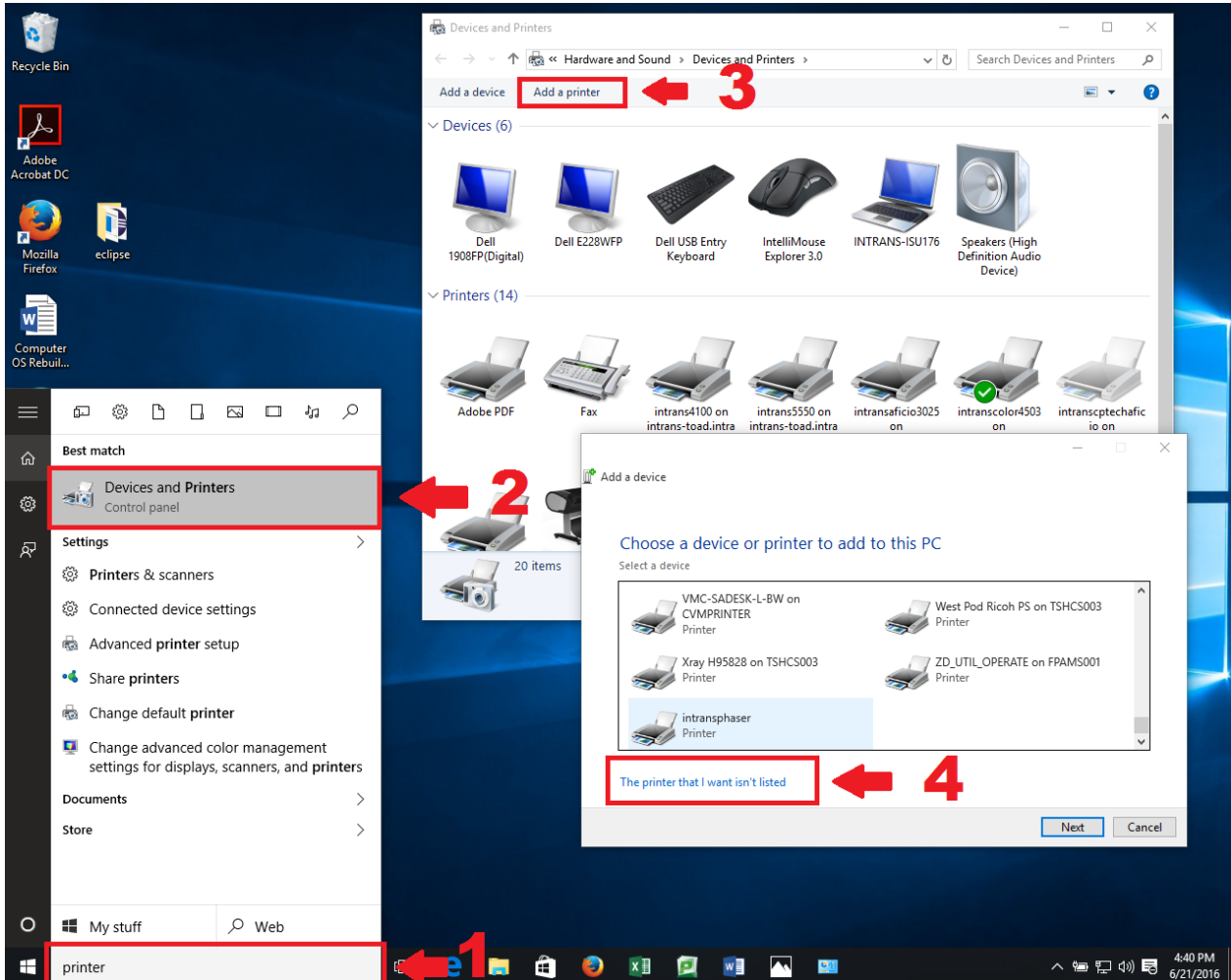


Mapping Printers on Windows 10

Please refer to the screenshot below.

1. Navigate to the search bar, and search “**printers**”
2. Select **Devices and Printers**
3. Click “**Add a Printer**” from the menu bar
4. Select “**Add a network, wireless, or Bluetooth printer**”



5. Select **“The printer I want isn’t listed”**
6. Select **“Find a printer in the directory...”** and click **Next**
7. In the **“Name”** field, enter **“intrans”** and press the Enter key
8. Double click on the desired printer
9. Click through the remaining screens accepting the default options

Repeat this process for each printer you want to add

