

## Soff Cut 2015

District Manager: Troy Fruth, MN, ND, SD

# Soff Cut® - Ultra Early Entry™ System



# Husqvarna Soff-Cut

---

- **Husqvarna Soff-Cut**

- 5000, 27hp Kohler, 4" depth
- 4200, 23hp Kohler, 3" depth
- 2500, 11hp Honda, 1 1/2" depth



# Husqvarna Soff-Cut

---

- **Husqvarna Soff-Cut**

- 4000, 20hp Kohler, 2 3/4" depth
- 2000, 9hp Robin, 1 1/2" depth
- 150, 4.3hp Robin, 1 3/16" depth



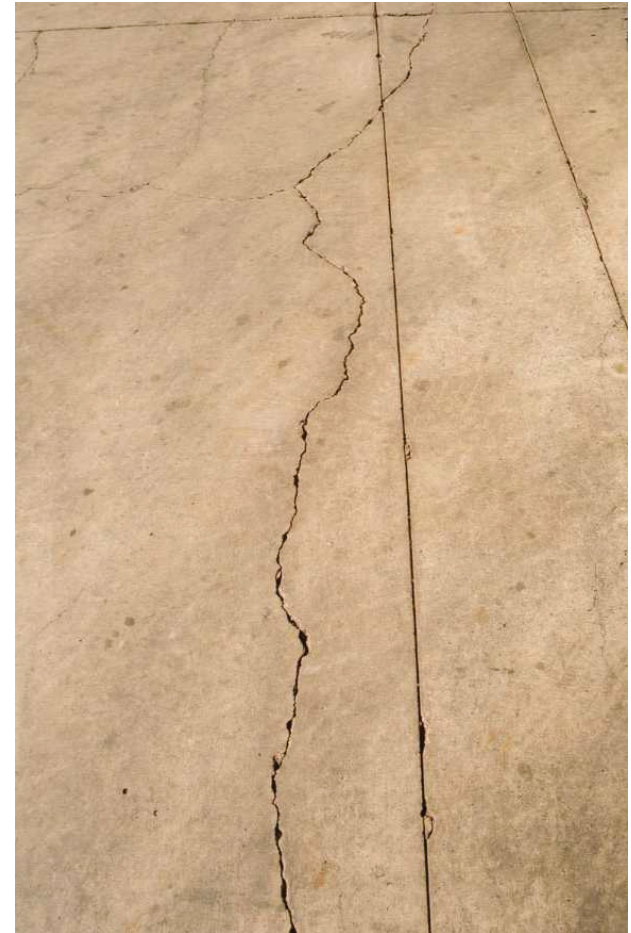


# Why Use Soff-Cut?

---

## Random Cracking in Concrete

Of the many problems facing contractors, random cracking is among the most costly and aggravating. Random cracking is particularly troubling because it immediately casts doubt on concrete quality, leading to owner dissatisfaction, callbacks and disputes.



# Green Zone™ & Ultra Early Entry™

- Green Zone™
  - The first 2 hours after finishing and before final set.
- Ultra Early Entry™
  - Soff-Cut® is the only system that can cut during the Green Zone™



# Ultra Early Entry™ Dry Cutting System



- The Husqvarna/Soff-Cut technology is based on the combination of 4 key elements.
- **(#1)** SoffCut blade, **(#2)** Blade Block, and **(#3)** Skid Plate, **(#4)** The Timing of Cut

# Ultra Early Entry™ Dry Cutting System

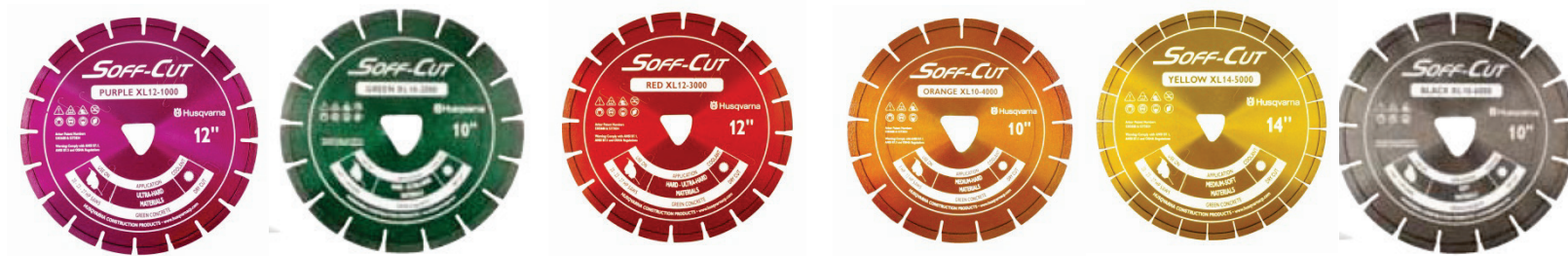
---



The up-cutting rotation of the Blade combines with the Blade Block, Skid Plate and Saws weight, to apply pressure on the surface of the concrete to prevent chipping, spalling and ensures the highest quality control joint available.



# Soff-Cut Excel




## Excel blades application chart.

MATERIAL	EXCEL 1000 PURPLE	EXCEL 2000 GREEN	EXCEL 3000 RED	EXCEL 4000 ORANGE	EXCEL 5000 YELLOW	EXCEL 6000 BLACK
ULTRA-HARD AGGREGATE, NON-ABRASIVE SAND (FLINT)	●	●	—	—	—	—
HARD AGGREGATE, NON-ABRASIVE SAND (CHERT)	●	●	—	—	—	—
MEDIUM TO HARD AGGREGATE, MEDIUM ABRASIVE SAND (TRAP-ROCK)	○	●	●	●	—	—
MEDIUM AGGREGATE, MEDIUM ABRASIVE SAND (QUARTZ)	—	○	●	●	—	—
MEDIUM TO SOFT AGGREGATE, ABRASIVE SAND (GRANITE)	—	—	○	●	●	●
SOFT AGGREGATE, ABRASIVE SAND (LIMESTONE)	—	—	—	○	●	●
SOFT AGGREGATE, SOFT LIMESTONE SAND	—	—	—	—	—	—
Read more on page	59	60	60	61	61	62

● = Optimal ● = Good ○ = Acceptable — = Not recommended

Speed ----- Life

# Husqvarna/Soff-Cut Resources



**Husqvarna**

The Soff-Cut® System





An educational video showing how the Soff-Cut® System works and the importance of cutting in the Green Zone™.


English • Español  
Français • Português

**Soff-Cut® Ultra Early Entry Sawing**  
**Check List**  
(To ensure good saw joint quality)

- Timing of cut! (In normal weather and job conditions 9-18 hours from start of pour.)
- Make sure blade break in time is honored. (Instructions on box.)
- Make sure blade is aligned in skid slot and not cutting into the skid causing damage!
- Find optimum forward travel speed. (Pulling left, too slow. Pulling right, too fast. (Blade must cut as freely as possible, not putting too much pressure on either side of joint.)
- Don't walk on saw joints while cutting!
- Transport and store saw without blade but always with a skid plate attached!

- Change skid plate with every new blade! (If starting out the day with a used blade and skid, inspect bottom surface of skid to make sure there is no damage.)
- Inspect used blade to make sure none of the diamond segments are overheated!
- Check blade block plungers making sure they are moving up and down freely allowing proper pressure of skid on concrete surface! (Clean blade block daily.)
- Use joint protectors at saw joint intersections and at saw drive wheel locations!
- Don't sweep across the saw joints only in the same direction as the joints!



**HUSQVARNA CONSTRUCTION PRODUCTS**  
17400 Hwy 119th Street, Clovis, KS 66041 USA  
Tel: 800-845-1312, Fax: 800-237-9294  
[www.husqvarna.com](http://www.husqvarna.com)



**Husqvarna<sup>®</sup>**

[www.husqvarnacp.com](http://www.husqvarnacp.com)